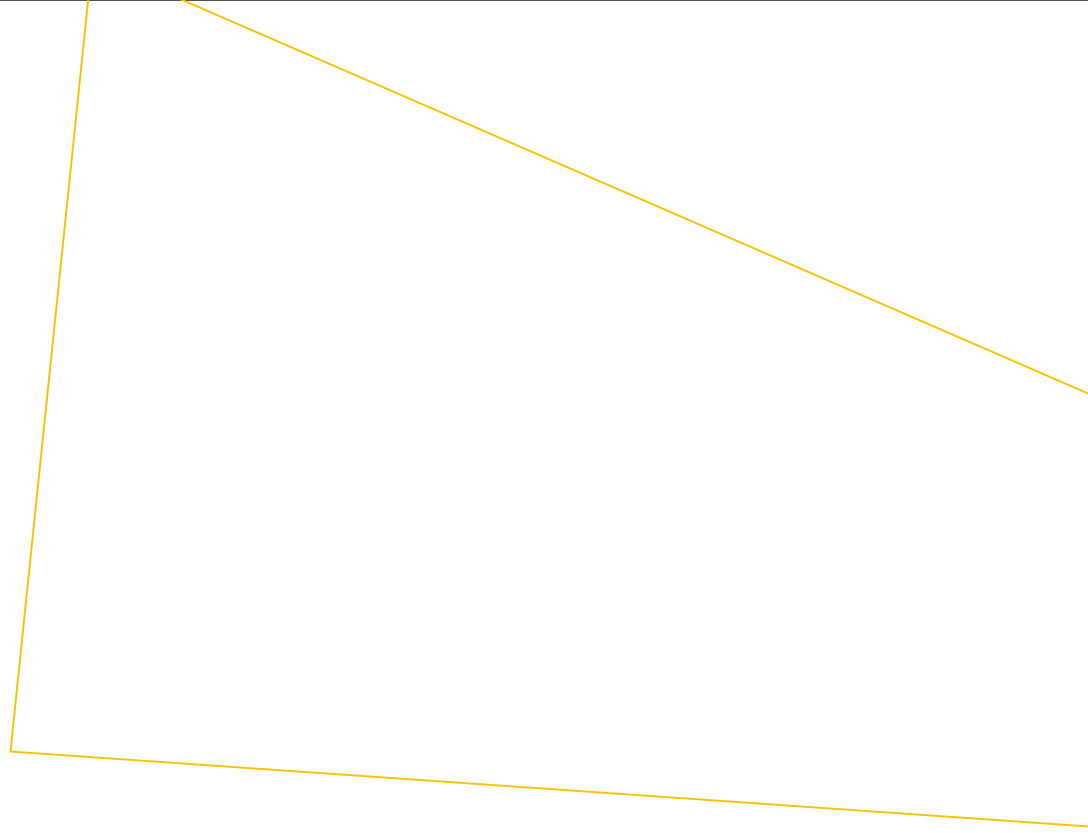


ECO系列高效瓶坯注塑系统

ECO High Efficient Preform Injection System

DE MACK



Electric screw drive

Pressure hold valve

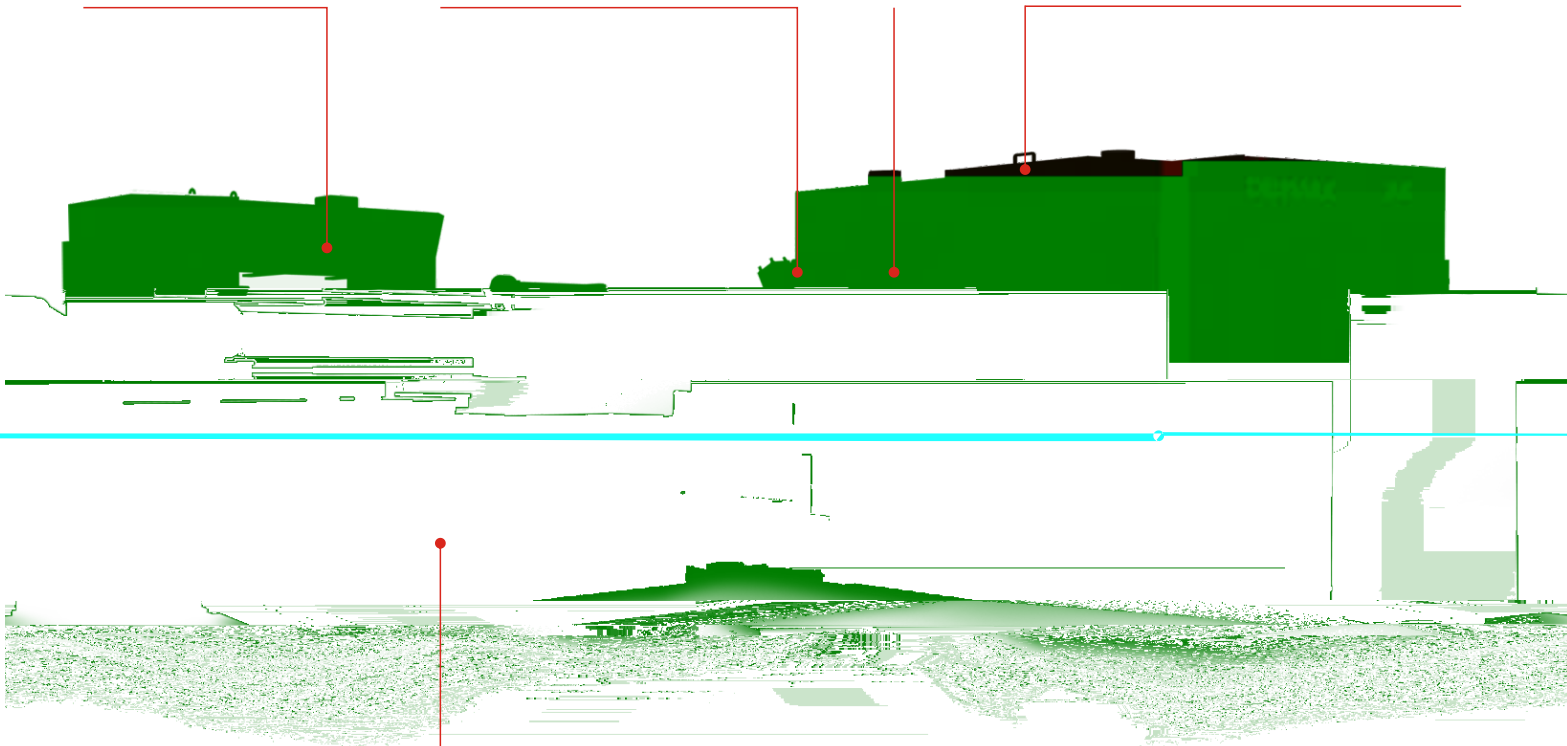
Reliable clamping

Proportional valve control

Independent electric screw drive brings you both plasticization and energy efficiency.

With the advanced pressure hold technology, the system makes the plasticization and pressure hold at the same time therefore has a better cycle time for production.

Special design for PET preform mold, which ensure the fast clamping movement and uniformly forced of the mold.



Servo motor drive hydraulic system

The hydraulic system was driven by a servo motor which ensure the lower energy consumption and sufficient hydraulic power supply.

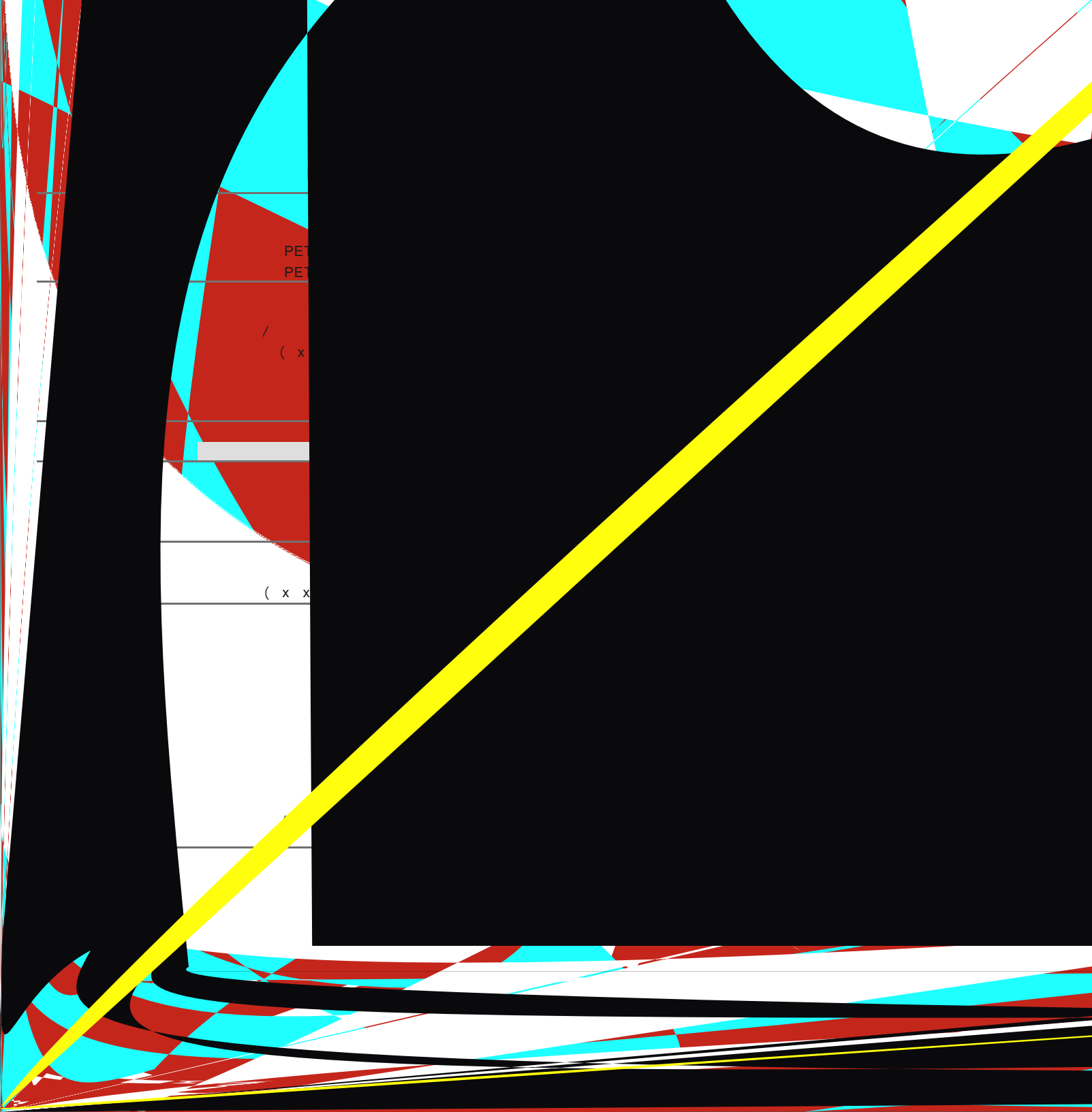
Ser

西门子控制系统 SIEMENS control system



β

β°



PET
PET

/
(x

(x x

